
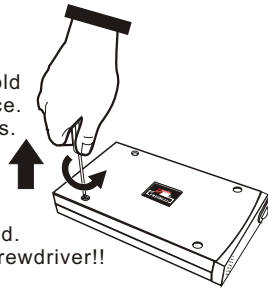


# Installation Guide

## Step 1 Unscrew

Remove the two screws in which hold the outer Bondi Plastic Shell in place. The screws are Philips head screws.

 Screwdriver is not included. **Caution** You will need a Proper Screwdriver!!



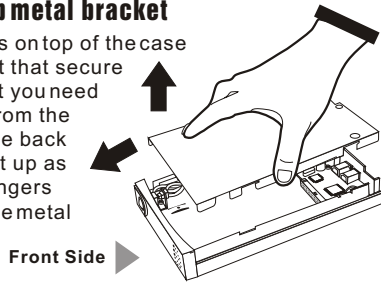
## Step 2 Lift the top Bondi Plastic Shell

Carefully lift the top Bondi Plastic Shell (back side) upward and away from the enclosure.



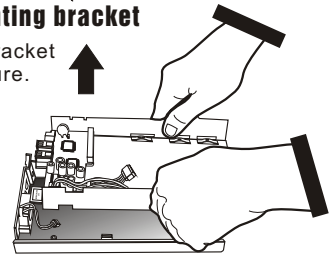
## Step 3 Lift the top metal bracket

The metal cover that sits on top of the case has 4 little L shaped feet that secure the cover in place. What you need to do is grab the cover from the side and push toward the back end of the drive and lift it up as illustrated. Keep your fingers tightly on the sides of the metal cover.



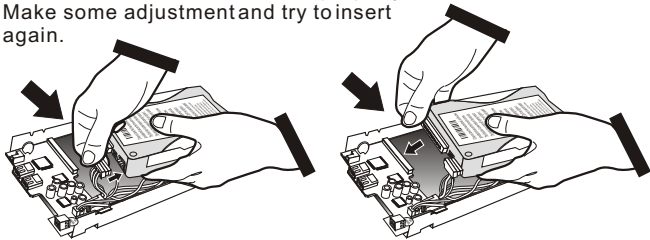
## Step 4 Lift the metal mounting bracket

Carefully lift the metal mounting bracket upward and away from the enclosure.



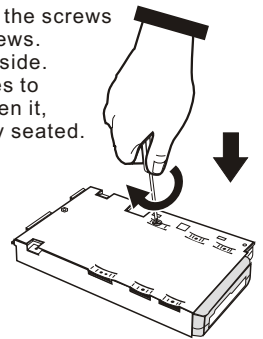
## Step 5 Connect the HDD power cable and IDE connector

Plug the power cable and IDE connector. If the IDE connector does not fit properly, do not force it. Make some adjustment and try to insert again.



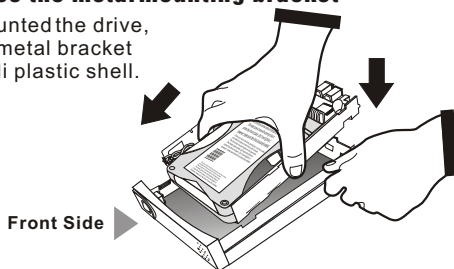
## Step 6 Mount the HDD with metal mounting bracket

Once you have the drive positioned, use the screws provided and secure the drive with 4 screws. The drive has 4 screw holes on the back side. The metal case comes with opening holes to screw the drive in place. Don't over tighten it, however, make sure the drive is securely seated.



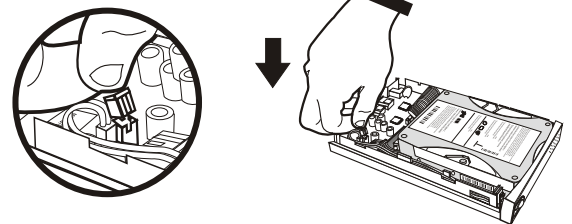
## Step 7 Place the metal mounting bracket

After having mounted the drive, place the entire metal bracket back to the Bondi plastic shell.



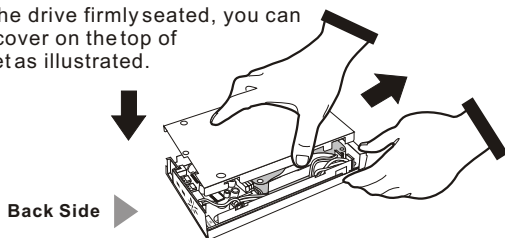
## Step 8 Power the cooling fan

Connect the Cooling fan power cable on J5.



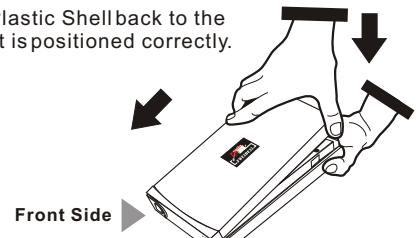
## Step 9 Place the top metal bracket

Once you have the drive firmly seated, you can place the metal cover on the top of the metal bracket as illustrated.



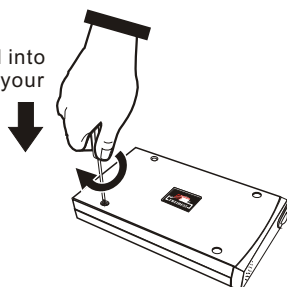
## Step 10 Place the top Bondi Plastic shell

Place the top Bondi Plastic Shell back to the case and make sure it is positioned correctly.



## Step 11 screw

Secure the Bondi Plastic Shell into place with the two screws and your FWEIDE35 is ready to go!



## Step 12 Stick the footpad

